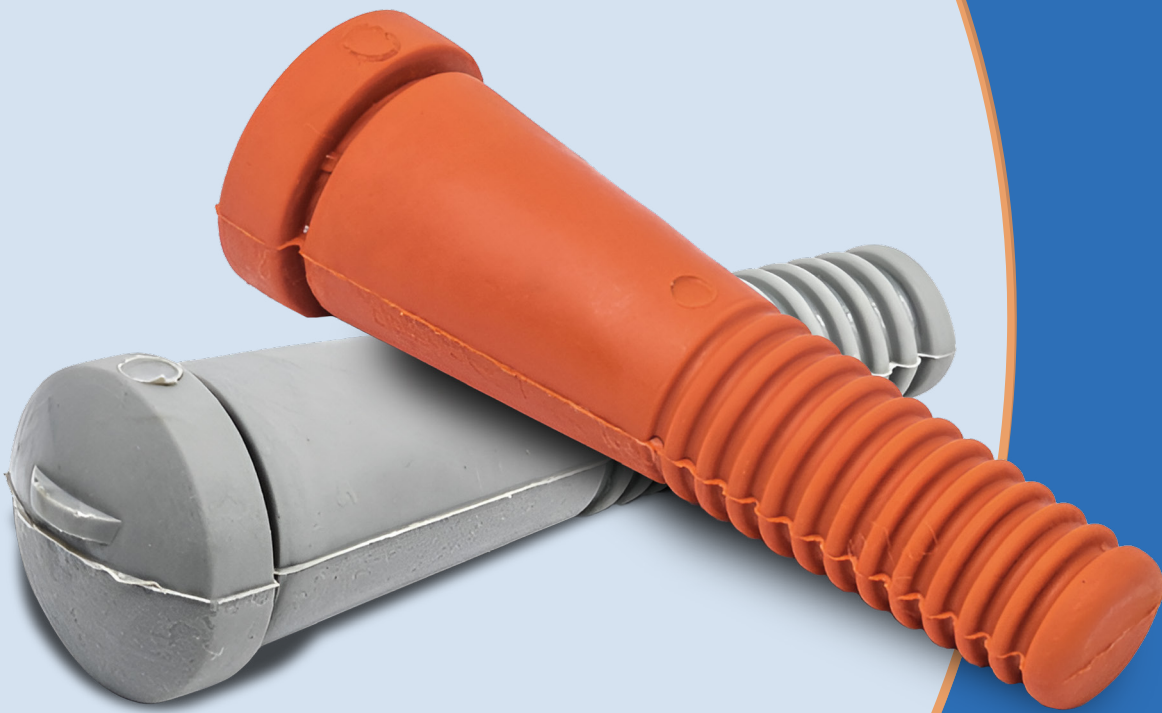


Duram Picking Fingers



Let the fingers do the talking.

DURAM Industries A.C. Ltd. is one of the leading manufacturers of rubber picking fingers for all types of automatic poultry picking machines available in the international market. Our DURAM fingers are produced using modern and sophisticated injection machines and are distributed worldwide.

We prioritize high-quality raw materials, advanced production techniques, thoughtful design, and strict quality control at every stage of production. This commitment ensures that our fingers offer high quality, efficient performance, and long-lasting durability in pickers, ultimately helping to save costs and minimize replacement time.

Our extensive selection of fingers allows each facility to select the optimal fingers to meet its specific conditions and requirements. DURAM fingers are specially designed to perform effectively in both hot and cold water, making them ideal for “kosher” and “halal” processing.

All rubber compounds used for DURAM fingers are USDA-approved and safe for food contact. Furthermore, DURAM is certified with ISO 9001 and ISO 14001 standards.

In addition, we offer unique anti-bacterial fingers made from a special rubber compound.

Our DURAM rubber fingers are available in Black, Yellow, Red, Blue, Green, and Orange colors, and come in different hardness levels, ranging from very soft to very hard as follows:

| Compound | Hardness level | Shore |
|----------|----------------|---------|
| M-20 | Extremely Soft | 31-36 |
| M-30 | Super Soft | 40-45 |
| M-45 | Very Soft | 45-50 |
| M-50 | Soft | 49-52 |
| M-60 | Soft | 53-56 |
| M-70 | Medium Soft | 55-58.8 |
| M-90 | Medium | 58.5-63 |
| M-100 | Medium Hard | 62-65 |
| M-110 | Hard | 65-68 |
| M-140 | Very Hard | 68-72 |
| M-178 | Extremely Hard | 76-80 |



GINA

GINA is one of Duram's most popular models, a round finger with a uniquely contoured profile and specialized rib structure. It offers excellent feather removal performance while maintaining skin integrity. The robust neck and head design ensure secure placement in disc holes, extending the finger's operational life. GINA was developed specifically to protect sensitive areas during high-speed processing.



BELLA

Specifically developed by Duram for disc-style poultry pickers, the BELLA is a round finger approximately 1.5 cm (0.59 inch) longer than standard fingers like Gina, Kop, Lino etc. The BELLA is an ideal solution for processors who need extended finger length for enhanced feather removal with large broilers or improved coverage of the different bird parts in standard pickers.



GAIA

The GAIA was developed in response to market demand. It is slightly longer than the BELLA model—by approximately 1 cm (0.39 inch)—to enhance flexibility and contact during disc rotation. The GAIA is suitable for both large broilers and small turkeys.



KOP

Another of our popular models, the KOP is a semi-oval finger with a reinforced head for extended durability. The KOP features a unique body and rib design that delivers excellent picking results.



DURTY

The DURTY is an oval-shaped finger that offers excellent longevity and plucking performance. Soft yellow DURTY fingers are among the most widely used and are ideal for delicate operations requiring high-quality picking results.



ORNA

The ORNA is an oval-shaped finger with a thin profile that offers flexibility and gentle contact with the bird's skin, making it ideal for operations requiring a soft touch. Its specialized head design ensures a firm grip in the disc hole, contributing to extended service life.



LINO

The LINO is a round finger with a specialized design and fine ribs. It offers maximum flexibility and excellent picking results while minimizing skin damage and ensuring long service life.



LINDA

The LINDA is a round finger, representing a compact version of the LINO finger with a smaller head.



MIKA

The MIKA is a round finger with a unique design. Its gentle ribbing allows for delicate skin contact, delivering highly effective picking performance without causing damage to the bird.



DP-52

The DP-52 finger is engineered for strength and endurance, making it ideal for heavy-duty jobs, particularly in turkey defeathering. Its rugged construction ensures excellent performance in harsh operating environments.



MEYDUR

The MEYDUR is a robust finger with a reinforced head and strong profile, designed for high-speed poultry processing. It offers excellent grip within the disc hole and superior durability under intense working conditions.



L.P.

The L.P. is a uniquely profiled finger with specially designed ribs for deep feather penetration. The L.P. provides thorough cleaning while retaining a high degree of flexibility - an uncommon trait for such a strong finger.



DURAM 302

A round finger, developed for gentle picking applications. The DURAM 302 model ensures effective feather removal while minimizing the risk of skin damage.



DURAM 301

The DURAM 301 combines a specially engineered design with high-quality compound materials to provide outstanding performance. Known for its extended lifespan and consistent results, DURAM 301 is ideal for COUNTER-ROTATING pickers.



DURAM 101

The DURAM 101 is structurally similar to the DURAM 301 model but features a narrower neck, making it suitable for thinner drums. It is ideal for use with COUNTER-ROTATING pickers.



DURAM 351

Designed for robust performance, the DURAM 351 is a thick-ribbed, heavy-duty round finger optimized for turkey processing. Its sturdy design provides long-term durability and superior plucking efficiency. Suits COUNTER-ROTATING pickers.



GAINESVILLE

The GAINESVILLE is a flat, resilient finger designed for high-performance hock picking and turkey processing. Its broad surface ensures superior contact with the bird's skin, while its flexibility helps prevent skin tearing. Available in various lengths, GAINESVILLE is also offered in a special compound resistant to high-temperature water, especially for paw processing.



BETTI

The BETTI model is a uniquely flat, reinforced finger featuring a thick neck and robust body structure which provides superior durability. It delivers excellent performance under heavy-duty operating conditions and is commonly used in turkey processing lines.



SANDRA

The SANDRA is a new-generation flat finger featuring a strong build and wider ribs. It delivers excellent performance in paw cleaning operations, particularly for turkeys.



VERED

One of Duram's newer designs, VERED resembles the GAINESVILLE finger but is oval shaped. It offers excellent skin contact for efficient feather removal and sufficient flexibility to minimize skin damage. It is also available in a special compound resistant to high-temperature water, especially for paw processing.



DALIA

The DALIA is a large, round, heavy-duty finger specifically engineered for high-capacity operations. Its thick, durable body structure and reinforced disc grip ensure long-lasting performance and deliver superior plucking results, particularly with large poultry such as turkeys and ducks, even under demanding conditions.



BRIZA

The BRIZA is a round finger with an extended length of 1.5 cm (0.59 inch) over standard models. It features a thick profile with strong, reinforced ribs, enabling efficient feather removal from larger birds, especially in challenging areas like tails and paws. The finger is an ideal choice for turkey processing and duck wax-finishing systems.



ORTY

The ORTY is a hollow finger with a square-shaped head. It is remarkably durable thanks to its high-quality compound material and special design.



SIMA

The SIMA is a hollow finger with a round head, measuring 10 mm longer than the standard ORTY model. This added length enhances its reach and flexibility.



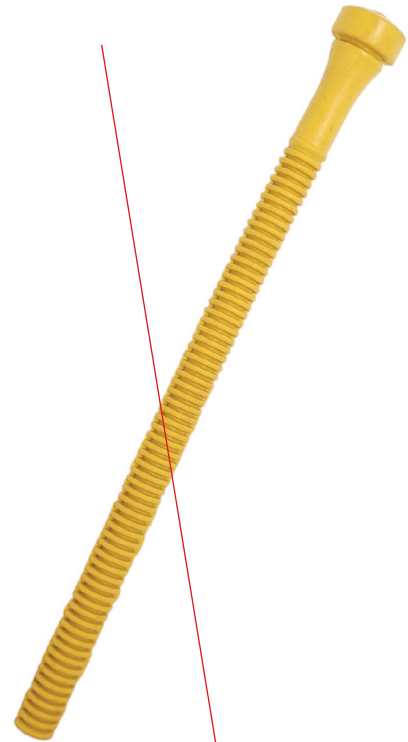
GALI

The GALI is a semi-round finger featuring ribs on one side only. Shorter and with finer ribbing than the RITA model, GALI is especially suited for CONTRAMATIC pickers. For optimal results when picking chicken, GALI is recommended in soft or medium rubber compounds.



DAFNA

The DAFNA is a long finger featuring ribs on one side only, a unique design engineered for deep cleaning between the legs and under the wings.



TAMI

The TAMI is a long, thick finger featuring ribs on one side only. Designed to fit STRADDLE pickers and CONTRAMATIC pickers, it is offered in multiple lengths - 12.7cm (5"), 14cm (5 1/2"), 21.9cm (8 5/8"), and 25cm (9 4/5")—to meet different processing needs. TAMI provides an ideal solution for deep cleaning between the legs and under the wings.



RITA

The RITA is a semi-round finger characterized by strong, thick ribs on one side. Approximately 4 cm (1 3/5 inches) longer than the GAINESVILLE finger, it is a reliable option for CONTRAMATIC pickers that require a longer, flexible, and sturdy finger.



NAVA

The NAVA is a long, flat finger with ribbing on both sides, designed for enhanced feather penetration. Its elongated body is ideal for accessing challenging areas such as between the legs and around the neck. NAVA is used in CONTRAMATIC / STRADDLE finishing machines.



IRIS

The IRIS is a long, round, solid finger designed for versatility and durability. Measuring up to 28 cm (11 inch), IRIS fits STRADDLE pickers.



JOHNSON

The JOHNSON is a long, durable finger tailored for heavy-duty jobs and large poultry processing. It is particularly effective for challenging tasks such as turkey defeathering. The JOHNSON is suitable for several CONTRAMATIC pickers. Available in four standard lengths to meet various processing requirements:

J-2500 (5") 12.7cm

J-2600 (5 1/2") 14cm

J-2700 (7") 17.78cm

J-2800 (8 5/8") 21.9cm



AVIVA

The AVIVA model is a long, double finger, connected at the base for increased durability. Primarily designed for efficient feather removal in drum-style poultry pickers, it is highly effective for processing both chickens and turkeys.



OLGA

The OLGA is a long, round, heavy finger primarily used in poultry harvesting machines on poultry farms. It is designed to efficiently and safely collect birds for processing.



JANET

A round profile finger, the JANET is similar to the GINA finger. It is specifically developed for the Easy Change Picking System, providing a solution for safer and faster finger replacement. The JANET's unique, grooveless head design effectively reduces breakage and enhances stability at the finger's base, thereby ensuring a longer operational life.



CAROLYN

The CAROLYN is a round finger resembling the BELLA finger. It's engineered specifically for compatibility with the Easy Change Picking System, facilitating quicker and more secure finger changes. Its innovative head design, notably without a groove, works to minimize breakage while providing superior base stability, significantly extending the finger's service life.



NOA

The NOA is a semi-oval finger resembling the KOP finger, developed especially for the Easy Change Picking System, which offers safer, faster replacement. Its unique head design without a groove reduces breakage and stabilizes the finger's base, contributing to an extended lifespan.



SOFI

The SOFI is a small finger with a square profile and fine ribs, tailored for use in machines processing quail, pigeons, partridges, and other small birds.



LORI

The LORI is a small, round-profile finger with gentle ribs, ideal for use in pickers designed for very small birds such as quails, pigeons and partridges.



NOGA

The NOGA is a durable, flat finger designed for drum pickers that handle various types of poultry. Its robust structure ensures consistent performance.



MAYA

The MAYA is a short, round finger. It is ideally suited for pickers that utilize shorter fingers in their inner disc holes, or for any picking machine where short picking fingers are required.



ROSA

The ROSA is a short, round finger with gentle, rounded ribs. It is ideal for manual pickers requiring gentle contact and short finger length, and also suitable for disc holes where short fingers are combined in the inner plate holes.



SHELLI

The SHELLI is a round, hollow finger. Its specialized design and delicate touch make it highly effective for plucking small birds. This versatility also extends to its use in machines for cleaning vegetables such as onions, carrots, and leeks.

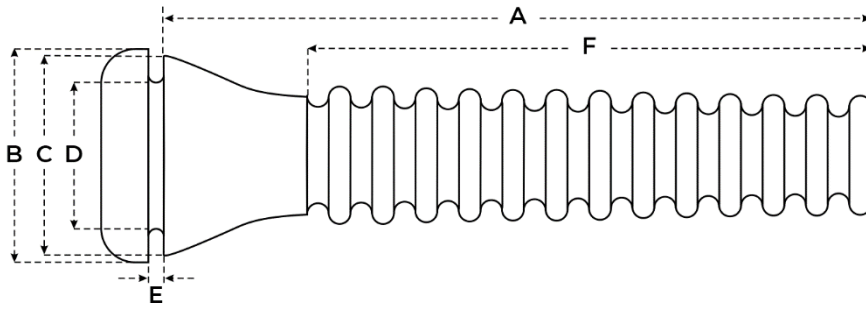


LILI

The LILI is Duram's smallest round finger, designed specifically for delicate picking operations such as quail processing. It is also widely used in agriculture for non-poultry applications, like removing thorns from rose stems, and in spice processing (e.g., lavender).



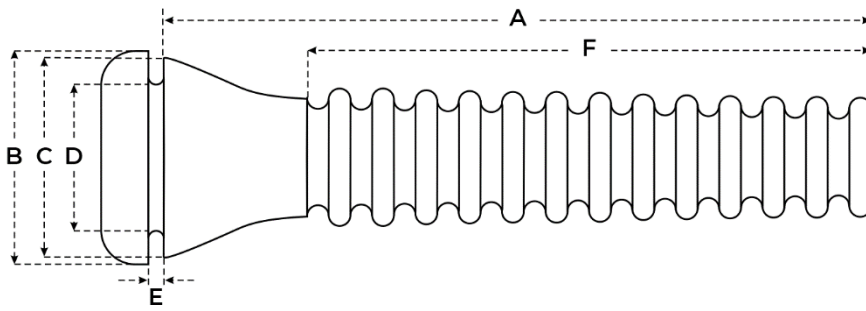
Technical data



| Type (cm) | A | B | C | D | E | F | Fingers In box | Box wt. (Kg) | Box wt. (Lb) |
|-------------|------|---------|------|-------|-----|------|----------------|--------------|--------------|
| AVIVA | 275 | | | | | 225 | 150 | 16 | 35.5 |
| BELLA | 96.5 | 30 | 23.7 | 20 | 2.5 | 68.5 | 500 | 18 | 40 |
| BETTI | 164 | 36 | 32.5 | 24X28 | 3.2 | 107 | 200 | 15 | 33.3 |
| BRIZA | 97 | 27 | 23.5 | 20 | 2 | 55 | 500 | 20 | 44.4 |
| CAROLYN | 96 | 30 | 24 | | | 69.5 | 500 | 18 | 40 |
| DAFNA | 247 | 27 | 20 | 16 | 2.2 | 208 | 300 | 15 | 33.3 |
| DALIA | 130 | 36 | 31 | 28 | 3.5 | 86 | 250 | 17.7 | 36.3 |
| DP-52 | 83 | 30.5 | 27 | 23.5 | 2.5 | 43 | 500 | 19.6 | 43 |
| DURAM 101 | 129 | 26.5 | 23 | 19.5 | 2 | 89 | 500 | 16.5 | 36 |
| DURAM 301 | 129 | 27.5 | 24 | 20 | 6.5 | 90 | 500 | 17.5 | 36 |
| DURAM 302 | 86 | 30 | 26 | 21 | 8.5 | 55 | 500 | 19 | 42 |
| DURAM 351 | 135 | 27.5 | 24 | 19 | 6 | 99 | 400 | 16 | 35 |
| DUROTÝ | 85.5 | 29 | 26 | 23 | 2 | 46 | 500 | 19.5 | 43 |
| GAIA | 106 | 30 | 23.7 | 20 | 2.5 | 66 | 500 | 20 | 44.4 |
| GAINESVILLE | 134 | 35 | 29.5 | 22X26 | 3.2 | 87 | 250 | 13.8 | 30.3 |
| GALI | 152 | 34 | 30 | 22X22 | 2.5 | 112 | 250 | 13.5 | 29.7 |
| GINA | 80 | 30 | 23 | 20.5 | 2 | 52 | 500 | 16.5 | 34.8 |
| IRIS | 282 | 26 | 20 | 16.1 | 2.2 | 243 | 300 | 16.5 | 36 |
| JANET | 80 | 30 | 24 | | | 53.5 | 500 | 16.5 | 36 |
| JOHNSON | 217 | 33.5x20 | 23.8 | 18.5 | 3.5 | 135 | 250 | 15 | 33 |
| KOP | 80 | 27.5 | 24 | 20.5 | 2.4 | 43 | 500 | 16 | 33.5 |

| Type (inch) | A | B | C | D | E | F | Fingers in box | Box wt. (Kg) | Box wt. (Lb) |
|-------------|-------|-----------|------|-----------|------|------|----------------|--------------|--------------|
| AVIVA | 10.82 | | | | | 8.85 | 150 | 16 | 35.5 |
| BELLA | 3.8 | 1.18 | 0.93 | 0.78 | 0.1 | 68.5 | 500 | 18 | 40 |
| BETTI | 6.45 | 1.41 | 1.28 | 0.94X1.1 | 0.12 | 4.21 | 200 | 15 | 33.3 |
| BRIZA | 3.82 | 1.06 | 0.92 | 0.78 | 0.07 | 2.16 | 500 | 20 | 44.4 |
| CAROLYN | 3.78 | 1.18 | 0.94 | | | 2.73 | 500 | 18 | 40 |
| DAFNA | 9.72 | 1.06 | 0.78 | 0.63 | 0.08 | 8.19 | 300 | 15 | 33.3 |
| DALIA | 5.12 | 1.41 | 1.22 | 1.1 | 0.13 | 3.38 | 250 | 17.7 | 36.3 |
| DP-52 | 3.26 | 1.2 | 1.06 | 0.92 | 0.1 | 1.69 | 500 | 19.6 | 43 |
| DURAM 101 | 5.07 | 1.04 | 0.9 | 0.76 | 0.07 | 3.5 | 500 | 16.5 | 36 |
| DURAM 301 | 5.07 | 1.08 | 0.94 | 0.78 | 0.25 | 3.54 | 500 | 17.5 | 36 |
| DURAM 302 | 3.38 | 1.18 | 1.02 | 0.82 | 0.33 | 2.16 | 500 | 19 | 42 |
| DURAM 351 | 5.31 | 1.08 | 0.94 | 0.75 | 0.23 | 3.9 | 400 | 16 | 35 |
| DUROTU | 3.36 | 1.14 | 1.02 | 0.9 | 0.07 | 1.81 | 500 | 19.5 | 43 |
| GAIA | 4.17 | 1.18 | 0.93 | 0.78 | 0.1 | 2.6 | 500 | 20 | 44.4 |
| GAINESVILLE | 5.27 | 1.37 | 1.16 | 0.86X1.02 | 0.12 | 3.42 | 250 | 13.8 | 30.3 |
| GALI | 5.98 | 1.33 | 1.18 | 0.86X0.86 | 0.1 | 4.41 | 250 | 13.5 | 29.7 |
| GINA | 3.15 | 1.18 | 0.9 | 0.8 | 0.07 | 2.04 | 500 | 16.5 | 34.8 |
| IRIS | 11.1 | 1.02 | 0.78 | 0.63 | 0.08 | 9.56 | 300 | 16.5 | 36 |
| JANET | 3.15 | 1.18 | 0.94 | | | 2.1 | 500 | 16.5 | 36 |
| JOHNSON | 8.54 | 1.32x0.78 | 0.93 | 0.73 | 0.13 | 5.31 | 250 | 15 | 33 |
| KOP | 3.15 | 1.08 | 0.94 | 0.8 | 0.09 | 1.7 | 500 | 16 | 33.5 |

Technical data



| Type (cm) | A | B | C | D | E | F | FINGERS IN BOX | BOX WT. (kg) | BOX WT. (lb) |
|-----------|-------|-------|-------|-----------|-----|-------|----------------|--------------|--------------|
| L.P. | 91 | 30 | 23.5 | 20 | 2 | 60 | 500 | 16.5 | 36 |
| LILI | 40 | 17 | 13.2 | 10 | 1.2 | 24.5 | 1500 | 7.85 | |
| LINDA | 82 | 26 | 24 | 21 | 2 | 53.5 | 600 | 17 | 37.75 |
| LINO | 80 | 27.5 | 23.5 | 20 | 2 | 50 | 600 | 18 | 39.6 |
| LORI | 78 | 22 | 20 | 15.5 | 2.5 | 45 | 1000 | 18 | 39.6 |
| MAYA | 55 | 26 | 21 | 18 | 2.5 | 43 | 1000 | 18 | 40 |
| MEYDUR | 78 | 28 | 23 | 20 | 1 | 49 | 600 | 17.3 | 38 |
| MIKA | 86.5 | 29.5 | 26 | 22 | 2 | 56 | 500 | 17.5 | 38.5 |
| NAVA | 255 | 33.3 | 23.4 | 19.8 | 3.1 | 205 | 300 | 18 | 40 |
| NOA | 80 | 28.5 | 24 | | | 43.5 | 500 | 16 | |
| NOGA | 132 | 23X35 | 23X26 | 23X20 | | 68 | | | |
| OLGA | 290 | 32 | 27 | 22.2 | 2.3 | 217 | 150 | 17 | 37.75 |
| ORNA | 82 | 27 | 24 | 21 | 1.5 | 50 | 600 | 17.8 | 39.6 |
| ORTY | 132 | 32X32 | 31 | 26 | 2.3 | 94 | 250 | 16.5 | 36 |
| RITA | 250 | 35 | 31 | 21.5x25 | 3.3 | 207 | 200 | 15 | 33 |
| ROSA | 48 | 30 | 25.5 | 20 | 2 | 24 | 800 | 17 | 37.7 |
| SANDRA | 167 | 37 | 31.5 | 25X25 | 2 | 106 | 200 | 15.5 | |
| SHELLI | 85 | 30 | 30 | 20 | 2.2 | 48.5 | 500 | 17 | 37.75 |
| SIMA | 147.5 | 29.5 | 23 | | | 107.5 | 250 | 15 | 33 |
| SOFI | 78 | 18 | 17 | 12.5 | 1.5 | 48 | 1000 | 13.5 | 29.7 |
| TAMI | 255 | 30 | 24 | 19.3x19.3 | 2.8 | 215 | 300 | 20 | 44 |
| VERED | 135 | 36.5 | 29.5 | 20X24 | 3 | 93 | 250 | 17 | 37.75 |

| Type (inch) | A | B | C | D | E | F | Fingers in box | Box wt. (Kg) | Box wt. (Lb) |
|-------------|-------|-----------|----------|-----------|------|------|----------------|--------------|--------------|
| L.P. | 3.58 | 1.18 | 0.92 | 0.78 | 0.07 | 2.36 | 500 | 16.5 | 36 |
| LILI | 1.57 | 0.67 | 0.52 | 0.39 | 0.04 | 0.96 | 1500 | 7.85 | |
| LINDA | 3.23 | 1.02 | 0.94 | 0.82 | 0.07 | 2.1 | 600 | 17 | 37.75 |
| LINO | 3.15 | 1.08 | 0.92 | 0.78 | 0.07 | 1.97 | 600 | 18 | 39.6 |
| LORI | 3.07 | 0.86 | 0.78 | 0.61 | 0.1 | 1.77 | 1000 | 18 | 39.6 |
| MAYA | 2.16 | 1.06 | 0.82 | 0.7 | 0.1 | 1.7 | 1000 | 18 | 40 |
| MEYDUR | 3.07 | 1.1 | 0.9 | 0.78 | 0.04 | 0.15 | 600 | 17.3 | 38 |
| MIKA | 3.4 | 1.16 | 1.02 | 0.86 | 0.07 | 2.2 | 500 | 17.5 | 38.5 |
| NAVA | 10.04 | 1.31 | 0.92 | 0.78 | 0.12 | 8.07 | 300 | 18 | 40 |
| NOA | 3.15 | 1.12 | 0.94 | | | 1.71 | 500 | 16 | |
| NOGA | 5.19 | 0.9X1.37 | 0.9X1.02 | 0.9X0.78 | | 2.67 | | | |
| OLGA | 11.41 | 1.26 | 1.06 | 0.87 | 0.09 | 8.54 | 150 | 17 | 37.75 |
| ORNA | 3.23 | 1.06 | 0.94 | 0.08 | 0.06 | 1.97 | 600 | 17.8 | 39.6 |
| ORTY | 5.19 | 1.26X1.26 | 1.22 | 1.02 | 0.09 | 3.7 | 250 | 16.5 | 36 |
| RITA | 9.84 | 1.37 | 1.22 | 8.46X0.98 | 0.13 | 8.15 | 200 | 15 | 33 |
| ROSA | 1.89 | 1.18 | 1 | 0.78 | 0.07 | 0.94 | 800 | 17 | 37.7 |
| SANDRA | 6.57 | 1.45 | 1.24 | 0.98X0.98 | 0.07 | 4.17 | 200 | 15.5 | |
| SHELLI | 3.34 | 1.18 | 1.18 | 0.78 | 0.08 | 1.91 | 500 | 17 | 37.75 |
| SIMA | 5.8 | 1.16 | 0.9 | | | 4.23 | 250 | 15 | 33 |
| SOFI | 3.07 | 0.71 | 0.7 | 0.5 | 0.06 | 1.89 | 1000 | 13.5 | 29.7 |
| TAMI | 8.86 | 1.18 | 0.94 | 0.76X0.76 | 0.11 | 8.46 | 300 | 20 | 44 |
| VERED | 5.31 | 1.43 | 1.16 | 0.78X0.94 | 0.12 | 3.66 | 9.84 | 17 | 37.75 |

Rubber Deboning Diaphragms

DURAM rubber diaphragms are engineered to meet the rigorous demands of modern processing facilities.

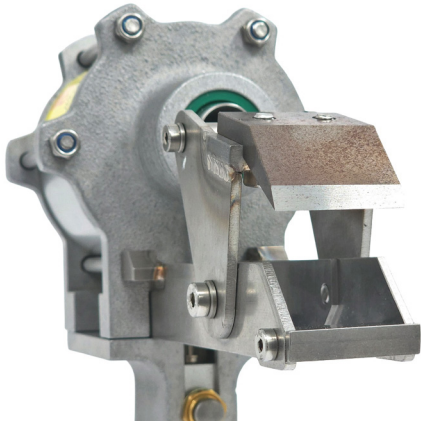
Duram diaphragms ensure thorough cleaning of bones and deliver unmatched efficiency and precision.

- Innovative new compound: Cleans bones thoroughly for superior processing outcomes.
- Wide range of sizes: Providing a solution that meets the diverse needs of all customers.
- Reliable Performance: Built to withstand intense usage while maintaining exceptional durability.
- Wide Hardness Range: High-performance options starting at 58 shore A and above, tailored to your needs.



Choose DURAM for cutting-edge deboning solutions trusted by industry leaders worldwide.





Duram Finger Cutter

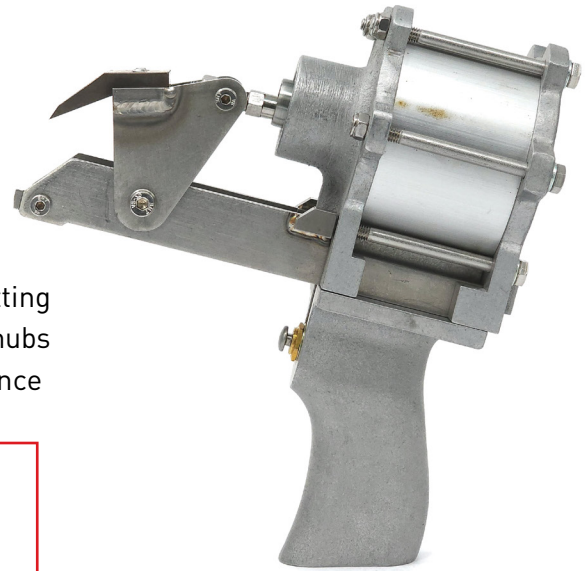
The Duram finger cutter is a pneumatic device designed to quickly cut old or used picking fingers to maximize efficiency and simplify cutting older rubber fingers. The Duram finger cutter is easy to operate, compact, lightweight and portable. It can easily be carried anywhere.

- Clean, quick cutting of picking fingers
- Convenient
- Fits all finger types
- Allows access to narrow spaces
- Eliminates wrist and palm pain from manual cutting
- Can be used with connected or separated discs or hubs
- Replaceable blade ensures long-term performance



ATTENTION!

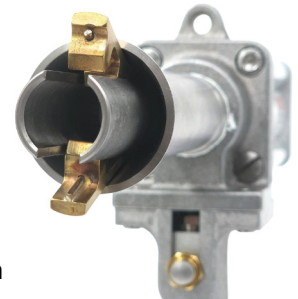
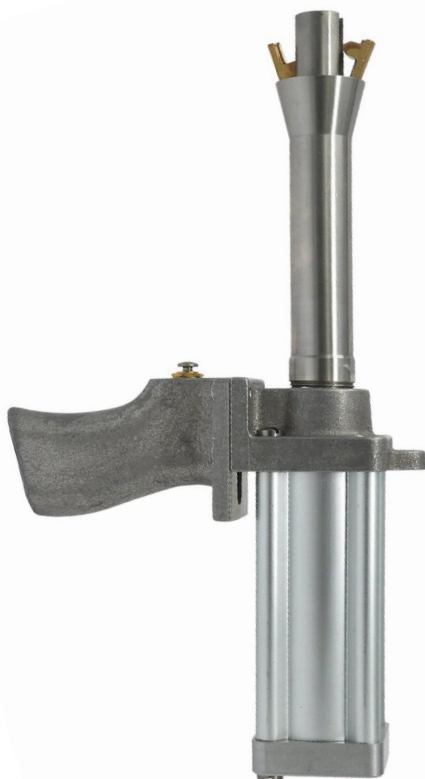
The cutter is very sharp!
Make sure your hands and fingers are not in the place you are about to cut.



Duram Finger Puller

The Duram finger puller is a pneumatic device designed to maximize efficiency and ease the difficult task of finger replacement involved in poultry picking. The Duram finger puller is safe & easy to operate, compact, lightweight and portable.

- Clean, greater mobility
- Convenient
- Fits all types of pickers
- Allows access to narrow spaces
- Easy entry into the disc
- Eliminates wrist and palm pain from manual finger pulling
- Can be used with connected or separated discs or hubs
- Consistent performance without any support tools or slippery instruments



Duram Finger Puller is a time & money saver.

Duram Industries A.C. Ltd

Kibbutz Ramat Hakovesh

Zip Code 4493000

Israel

Tel: 972-9-7474-456,7,8

Fax: 972-9-7474-479

Email: info@duram.co.il

http://www.duram.co.il

Distributor in the U.S.A. & Canada:

Meyhen International Corp.

556 Industrial Way West

Eatontown, New Jersey 07724

Tel: 800-348-6663

Fax: 732-905-7696

Email: info@diversifiedimports.com

http://www.meyhenfingers.com