



iPlassTouch

Climate and poultry management computer with touchscreen operation

- Suitable for complete automation of any type of poultry house
- Graphic display of all important management information
- Clearly arranged "dashboard" with touch icons for direct navigation
- 3D house overview with measurement values, can be configured to your preference
- With skylight- / daylight control
- Can be programmed in various languages
- USB port for updating and logging
- Secured communication with FarmConnect and **FarmRemote**



Feeding



Drinking



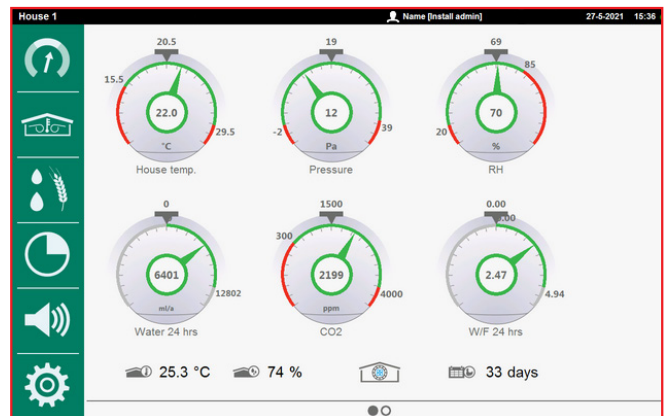
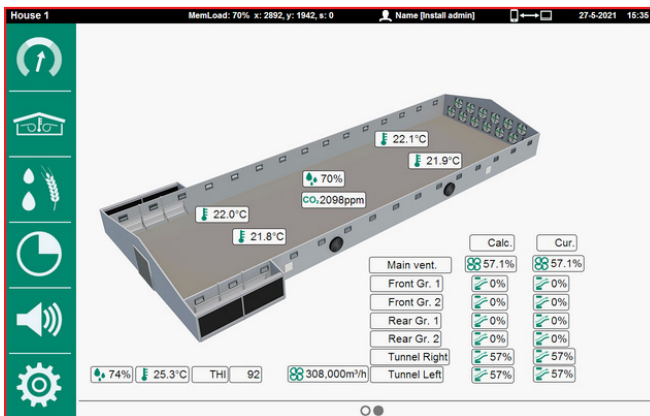
Climate



Housing

iPlassTouch : in Touch with your livestock!

This super clear and user-friendly climate and management computer with touch screen is designed to be the interactive heart of each type of modern poultry farm. The iPlassTouch manages and controls the quality of life of animals in order to achieve optimal performance results. The climate and management computer collects all data from Stienen systems for life bird weighing, feed weighing, silo weighing, egg counting and heat exchangers and processes the data into comprehensible tables and graphs. The graphical representation of parameters such as temperature, water, feed, weight, production, relative humidity (RH), light, carbon dioxide (CO2) and ammonia (NH3) provide you all the important management information at a glance. Thanks to the crisp and modern user interface all vital processes in the poultry house can be controlled, monitored and managed easily.



Summary of configurations

Standard options iPlassTouch	
Temperature sensors	10
Pulse inputs for counters, measuring fans etc.	5
Inputs 0-10Vdc for RH sensor, pressure sensor, etc.	4
Relay outputs 230Vac/2A	7
Outputs 0-10Vdc	8
Power supply 24Vdc/80mA for 1 AQC-unit	1
Power supply 12Vdc/15mA for measuring fans	1
Error contact 24Vdc/2A	✓

Extension options iPlassTouch	
Communication via RS-485 PCB	✓
Module bus connections for communication with external modules	3
Connection FN bus	1
General	
Power supply 230Vac - 50/60Hz	
Load 48 VA	
Protection class: IP-54	
Dimensions: 370 x 320 x 160mm	

FarmRemote (optional)

The remote control feature of the iPlassTouch enables you to read the current data of your animal house remotely using your smartphone, tablet or PC. You can even operate the iPlassTouch from the comfort of your armchair. The Stienen WEB-SEC interface guarantees a secure connection.



FarmConnect (optional)

The FarmConnect farm software collects all current and historical data of all control computers on your farm, combines this data, and then presents it in clear overviews, graphs and tables. FarmConnect gives you access to your farm data. Wherever you are, you are always connected to your company so that you can intervene immediately if necessary.